

The Smart Electro-Mechanical Lubrication Unit



LUBCON® MicroMax 120 External

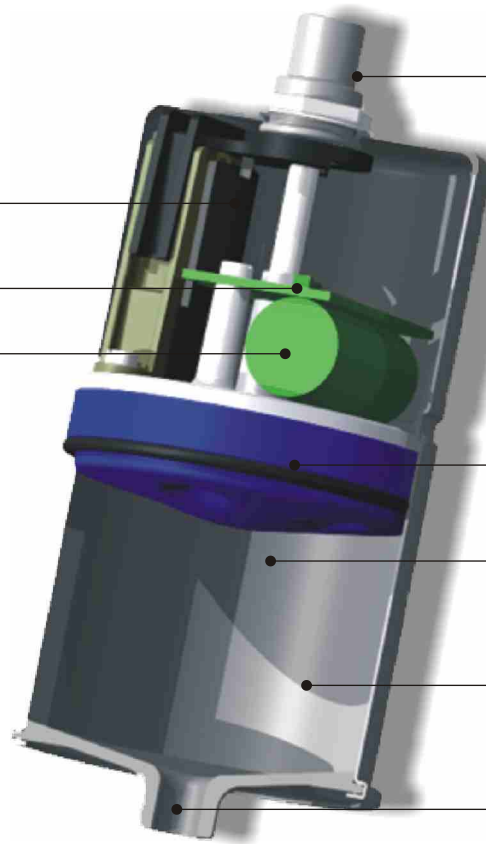
Optimum lubrication of bearings, ball screws, linear guides etc. during operation with a smart single point automatic lubricator. Lubrication of critical components in difficult to reach areas, over long periods is possible with our stand alone electro mechanical grease pump.



Stepper motor with integrated reduction gear

Control unit

Long life li-battery



Connection plug (PLC)

Piston

Lubricant reservoir

Metal housing

G1/8" fitting



The Electro-Mechanical Lubrication Unit

- ✓ economical robust and reliable
- ✓ lubrication over long periods

- ✓ long term lubrication
- ✓ automatic and machine controlled

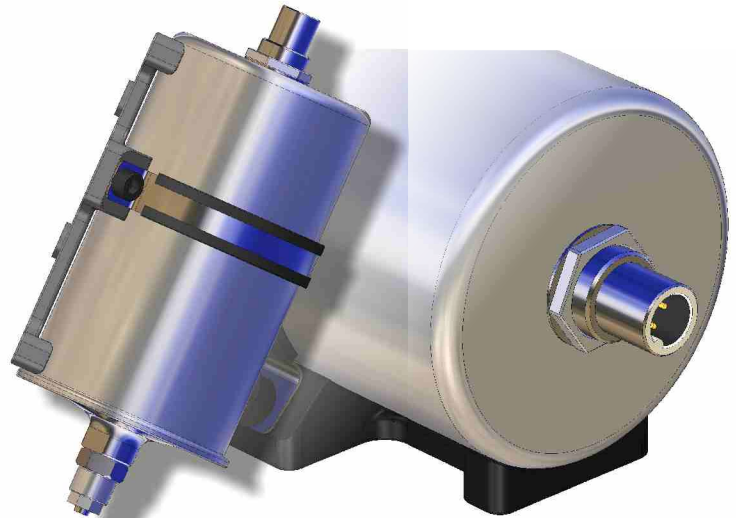
LUBCON® MicroMax 120 External

The Smart Electro-Mechanical Lubrication Unit



Modern Lubrication Providing Best Machine Performance and Reliability

- **Economical**
 - ✓ easy installation and activation
 - ✓ automatic and machine controlled lubrication
 - ✓ optimal metering of the lubricant
 - ✓ combination of high-performance lubricants and intelligent lubrication device
- **Robust and Reliable**
 - ✓ closed metal housing
 - ✓ completely sealed unit
 - ✓ performs in extreme environmental conditions (dust, water, heat)
 - ✓ installation in any position
- **Lubrication Over Long Periods**
 - ✓ individually adjustable operating time
 - ✓ possible operating range up to 36 months
 - ✓ lubrication device for minimum quantities
 - ✓ e. g. at 3 years operating time: 40 cm³ per year
 - ✓ lubrication interval controlled by machine



Connection plug (PLC)

LUBCON Lubrication System

The **MicroMax 120 External** is an electro-mechanical lubricator to automatically lubricate with grease or oil. The aluminum body of the **MicroMax 120 External** contains 120 cm³ lubricant. A progressive advancing piston pushes the lubricant through the outlet to the lubrication point. The forward motion of the pistons is generated by a geared motor and a spindle drive. The control of this movement, the time monitoring of the lubrication interval and the activation and control of the drive motor is done by a micro processor. A fixed unremovable lithium battery supplies the electronic circuit and the motor with energy. The maximum life of the battery is 3 years.



Accessories

Mounting bracket with metal-rubber fixture

Tube connector G 1/8" or NPT 1/8"

PA tube 6 x 4

Four-phase connecting cable with M 12 x 1 plug, PUR (PLC standard)

Technical Data	MicroMax 120 External
Lubricant volume	120 cm ³
Feed rate	0,12 cm ³ /stroke
Operating time	individual up to 36 months
Suitable lubricants	oils, greases up to NLGI class 2
Lubricant volume	120 cm ³
Dimensions (D x L)	63 mm x 122 mm (2.48" x 4.8")
Fitting	G 1/8"
Housing material	aluminium
Maximum length of tube	2 m (6 ft)
Recommended tube diameter	6 mm (outer diameter), 4 mm (inner diameter)
Ambient operating/	-20 °C up to +70 °C/ -4 °F up to +158 °F
Maximum feed pressure	10 bar / 145 psi
Protection class	IP68
Drive	electro-mechanical

*) Deep temperature limit is depending on the NLGI class

LUBCON Turmo® Lubrication, Inc.
Lubricants · Lubrication Engineering

5460 33rd Street SE · Grand Rapids, MI 49512 · USA · Tel.: 616-575-6034 · Fax: 616-575-6062
Toll Free: 877-887-6658 · inquiry@lubconusa.com · www.lubconusa.com

This brochure only contains product information. For specific information please refer to our technical data and safety data sheets. The indications made represent the present state of development and knowledge of LUBCON Turmo Lubrication, Inc., which is subject to change without notification. The products are subject to severe controls of manufacture and comply in full with the specifications set forth by our company, but due to the multitude of different influencing factors, we cannot assume any warranty for the successful application in each individual case. Therefore, we recommend to perform field tests. We strictly refuse any liability.